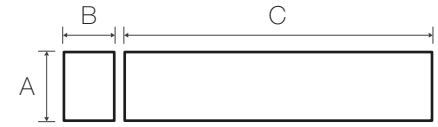
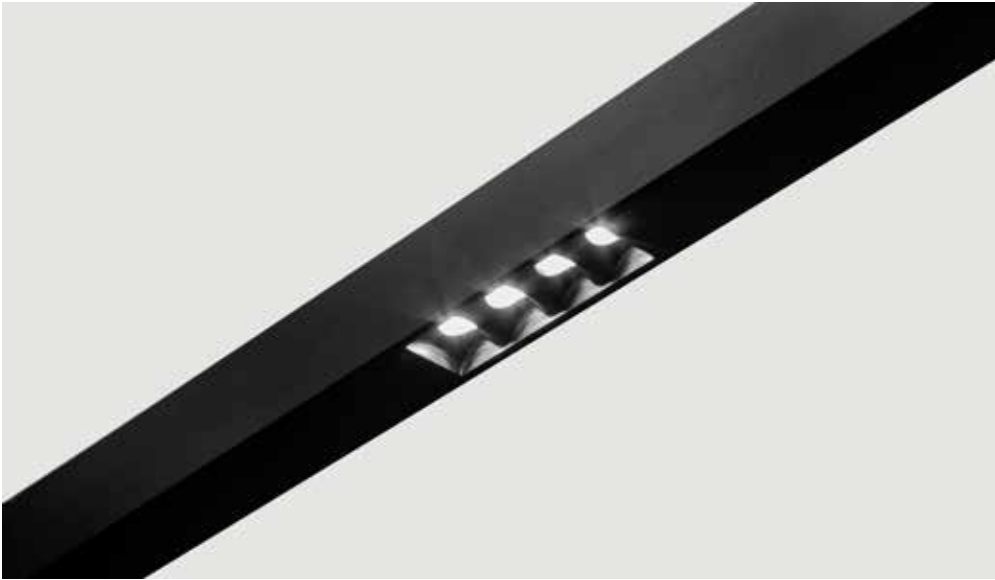


Easy Nevada AC Lineal



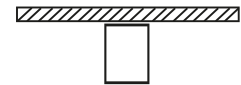
A	B	C
2.32	1.88	Per specification

(measures in inches)

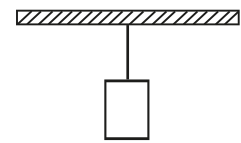
COLOR

- Black
 - White
- (Other colors on req)

Mounting Options



Surface mounted



Pendant

Luminaire **Easy Nevada AC Lineal** made of extruded aluminium profile, finished with electrostatic paint in color white or black (others on request), polycarbonate metallic optic, injected aluminium postoptic, Hight Contrast light of 42°, 51° and 61° beam angle. Suitable for DRY locations, luminous flux of 1613 to 8068 lumens, power of 14.8 to 74 W (power with driver losses included). Efficacy of 108.9 Lm/W, color temperature from 3000K to 5000K and CRI 80% (others on request), source life of 50,000 hours in the L80B10 at 45 degrees of temperature in the TC, 3 in the Step MacAdam. The luminaire has a multi-voltage driver, programmable, with a driver factor between 0.84 and 0.86 at 120V, with overvoltage protection, protection against ANSI C62.41 Cat. A 2.5 kV transistors, with internal thermal protection, dimming from 0- 10V (DALI optional), mounting accessories in sheet metal or steel with a metallized process, working temperature from -4 to 86 °F.



Materials:

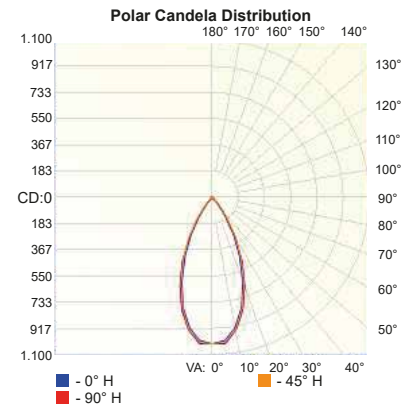
- Body:** Extruded Aluminum
- Post optic:** Injected Aluminum
- Finish :** Electrostatic Paint

Options:

- Dali Control
- 0-10V Control

Installation Options:

- Halls
- Lobbies
- Receptions
- Museums
- Galleries
- Comercial Spaces



Distance	Illuminance at a Distance	
	Center Beam LUX	Beam Width
0,67M	2.297 LUX	0,58 M 0,61 M
1,33M	577 LUX	1,15 M 1,21 M
2,00M	256 LUX	1,72 M 1,82 M
2,67M	144 LUX	2,30 M 2,42 M
3,33M	92,0 LUX	2,87 M 3,03 M
4,00M	64,0 LUX	3,45 M 3,63 M

■ Vert. Spread: 109,1°
■ Horiz. Spread: 105,1°

Ordering Code

LX-ENAC- _____
 A B C D E F

Length Table

LX-ENAC - Luxycon Easy Nevada AC Lineal

A	System Configuration
SM	Surface mounted
PD	Pendant

B	Beam Angle
W4	Wide Flood 42°
W5	Wide Flood 51°
W6	Wide Flood 61°

C	LED CCT
30	3000K
35	3500K
40	4000K
50	5000K

D	Fixture Finish Color
BK	Black
WH	White
OC	Other colors
Specify RAL code for OC ()	

E	Dimming
DL	Dali
D2S	0-10V dim - Single Circuit
if you need emergency module add an "E" in the end of the Code (DLE, D2SE)	

F	Postoptic Color
BK	Black
WH	White
PC	Premium Colors
Specify RAL code for PC ()	

C	Length	Exact dimension	Modules Number	Source Type	*Power (W)	*Input Lumens (Lm)	*Output Lumens (Lm)	Efficacy (Lm/W)
4	3.75ft	45.07"	8	COB	14.8	2053	1613	108.9
6	5.60ft	67.24"	12		22.2	3079	2420	
7	7.45ft	89.40"	16		29.6	4106	3227	
9	9.29ft	111.57"	20		37	5132	4034	
11	11.14ft	133.74"	24		44.4	6159	4841	
13	12.99ft	155.90"	28		51.8	7185	5648	
15	14.83ft	178.07"	32		59.2	8212	6455	
17	16.68ft	200.23"	36		66.6	9238	7261	
19	18.53ft	222.40"	40		74	10265	8068	
XXX	Custom length or flux. (Consult on factory)							

*The specified flux in the table is the input flux and it may vary depending on the LED module in the fixture.

*The source power includes driver loss.

ADDITIONAL DETAILS

CRI: 80
IP: 20 - Suitable for dry locations
Efficiency: 78.6%
Step MacAdam: 3
Lifetime: >50.000 h / L80B10
Driver information
Driver: Integrated
Driver type: Electronic
Power (W): 54 / 75
Supply Voltage (V): 120 - 277
Frequency (Hz): 60
CC/VC: PRG
Power factor: >0.9
THD (%): <10 to 120 VAC

